

Art Department Program Review 2021, Figures

Figure 1. Race/Ethnicity Enrollment % by Semester

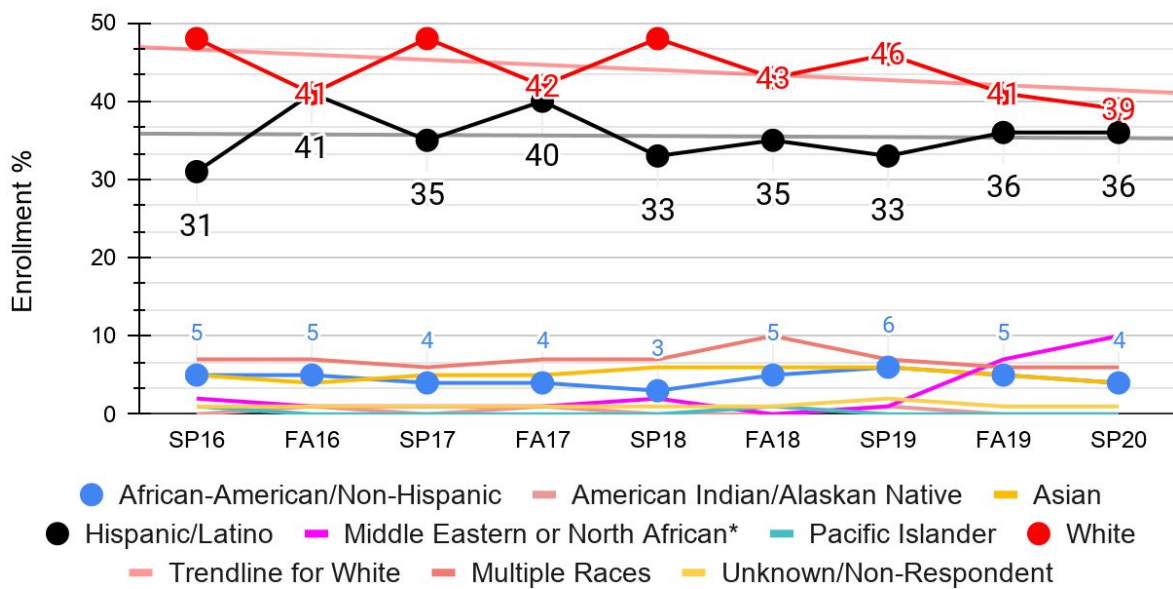


Figure 1. shows Race/Ethnicity Enrollment % by Semester. White and Hispanic/Latino enrollment are highest; this enrollment gap continues to close.

Figure 2. Race/Ethnicity Success % by Semester

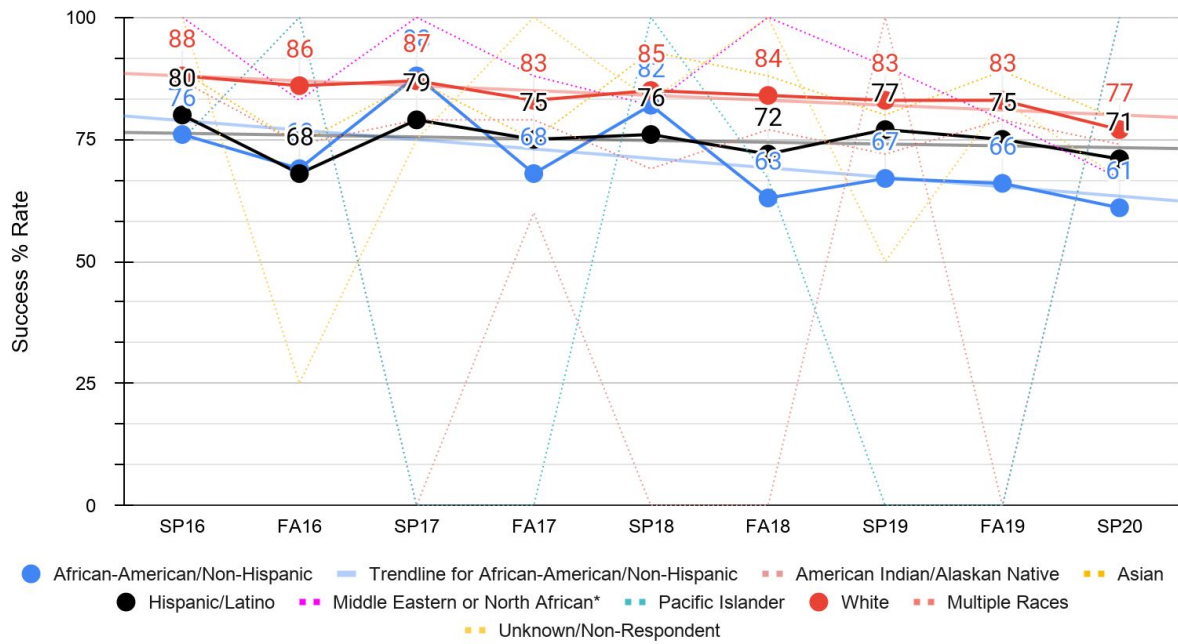


Figure 2. shows Race/Ethnicity Success & by Semester. White and Hispanic enrollment are highest. In the last five years: the average Hispanic/Latino equity gap is 8% lower than White students; the average African American equity gap is up to 13% lower than White students.

Figure 3. Department Success: F2F On-Campus Classes and 100% Online DE Classes

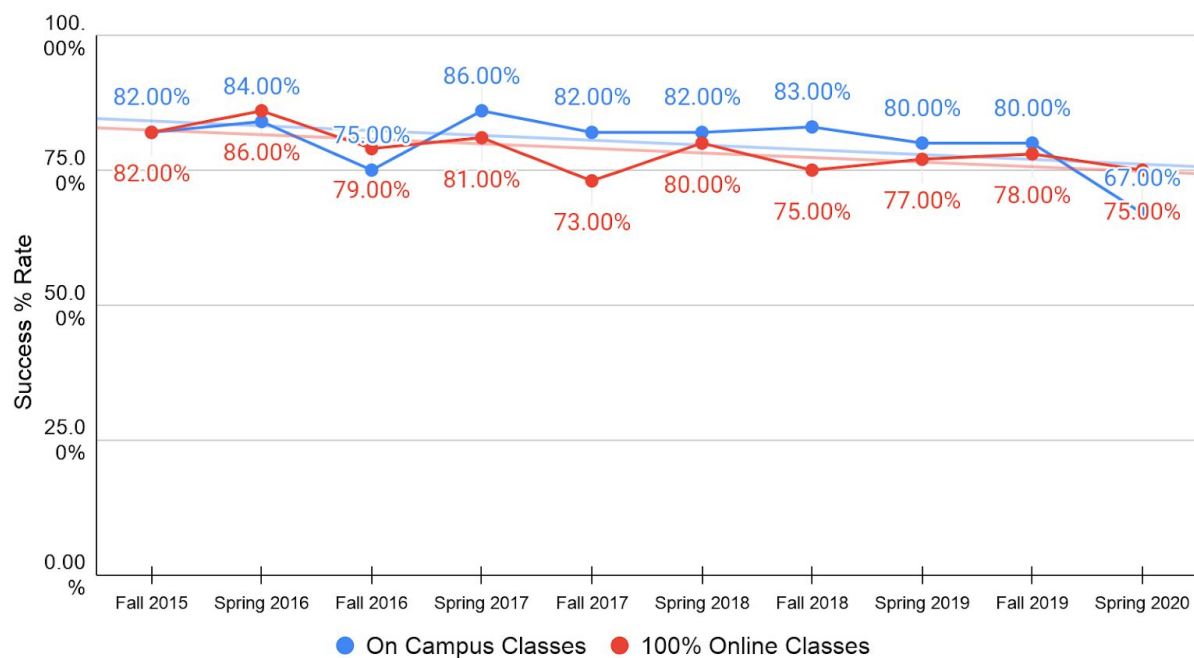


Figure 3. shows Department Success in Face to Face On-Campus classes and 100% Online classes, by Semester. In the last 5 years, both F2F On-Campus classes and 100% Online classes are slowly declining in success.

In the last 5 years, the Art Department's average for On-Campus success is 80.5% while the college is 77.5%; 100% Online courses are 78% successful compared to the college's 71.5%.

Figure 4. Enrollment by F2F On-Campus and 100% Online DE Courses

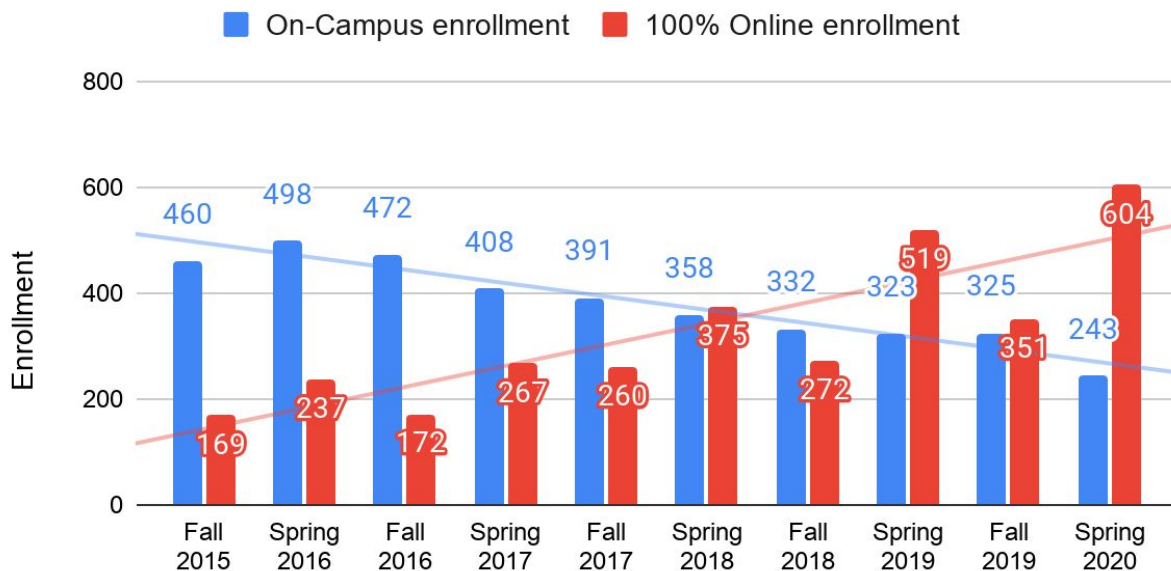


Figure 4. shows total Enrollment of F2F On-Campus courses and 100% Online DE courses. In the last 5 years, On-Campus enrollment is declining, while 100% Online enrollment is increasing.

In the last 5 years, 100% Online enrollment has increased by 357%. The majority of the program has moved to DE.

Figure 5. Fall 2015 Enrollment: 100% Online DE vs. F2F On-Campus

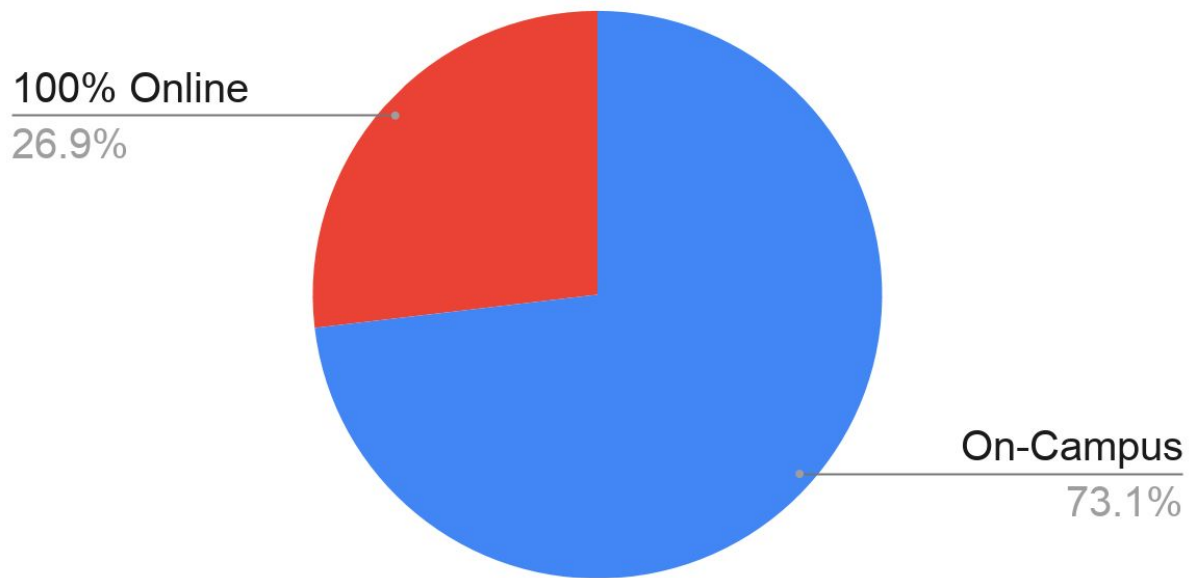


Figure 5. shows Fall 2015 ratio of Enrollment in F2F On-Campus courses and 100% Online DE courses. At this time, most of the Art History courses were still On-Campus.

Figure 6. Spring 2020 Enrollment: 100% Online DE vs. F2F On-Campus

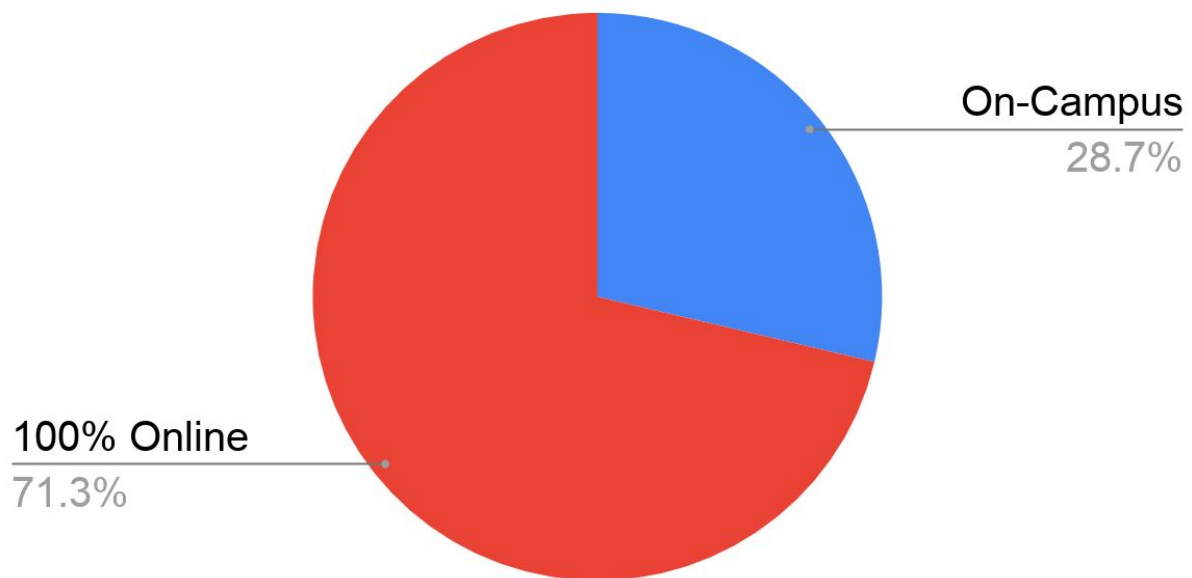


Figure 6. shows Spring 2020 ratio of Enrollment in F2F On-Campus courses and 100% Online DE courses. (By SP20, most of the Art History courses have transitioned to 100% Online DE)

Figure 5. Fall 2015 Enrollment: 100% Online DE vs. F2F On-Campus



Figure 6. Spring 2020 Enrollment: 100% Online DE vs. F2F On-Campus

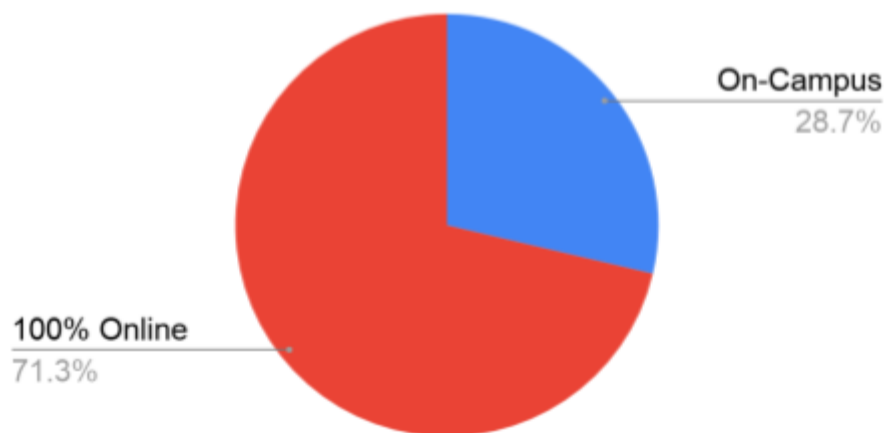


Figure 5 & 6 Combined shows that in 5 years, F2F enrollment has declined and 100% Online DE enrollment has increased. As of SP20, the department enrollment has flipped to 71% online.