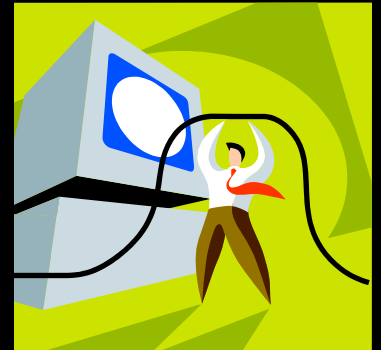


CIS 125 ONLINE NETWORK+ CERTIFICATION

TIM PHILLIPS

Welcome
Class Overview



COURSE AND INSTRUCTOR INFORMATION

- Instructor: Tim Phillips
- Section: Varies by semester
- Meets: Online
- Email: tim.phillips@gcccd.edu
- Web: <https://www.cuyamaca.edu/faculty-directory/tim-phillips/index.php>
- Phone: 619-660-4582 (I will not be on campus this semester due to the Covid situation)

CIS 125 NETWORK+ CERTIFICATION

- Prepares students for NETWORK+ Certification exam
- Comprehensive knowledge of:
 - OSI Model
 - Client/server and peer-to-peer networks
 - Physical network media (cables, switches, routers)
 - Network & routing protocols (TCP/IP, IPX/SPX, NetBIOS, AppleTalk)
 - Network topologies (Ethernet, Token Ring, FDDI, ATM, wireless)
 - Backup, restore, disaster recovery
 - Network management and security



WHO IS THIS GUY?



Instructor: Tim Phillips

Office: E-107C (not in office this semester due to Covid)

Website: <https://www.cuyamaca.edu/faculty-directory/tim-phillips/index.php>

Office Hours:

Varies by semester—see web site or course syllabus



WHO ARE YOU?

In order to get to know you and your fellow students your first assignment will be to go to Canvas and enter a Discussion Comment with the following information:

- Name?
- Computer Experience Level?
- Why are you taking this class?
- Tell us something interesting about yourself!

NOTE: this assignment is optional



WHAT WILL YOU BE ABLE TO DO BY THE END OF THE COURSE?

- NETWORK+

- Pass the CompTIA NETWORK+ certification exam
- Understand the physical aspects of a network
- Understand the logical and software aspects of a network
- Have an in-depth knowledge of networks
- Understand network management
- Understand network security issues



HOW ARE WE GOING TO DO THAT?

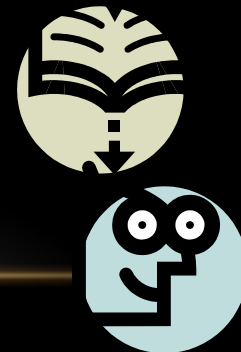


- Online format--Canvas
- TestOut LabSim Network Pro (required)
- Study guide for NETWORK+ certification exam (optional)
- Videos & web links
- Online Labs and Practice Exam Questions
- Online Midterm and Final Exam
- Online Network Pro and Network+ Practice Exams (optional)

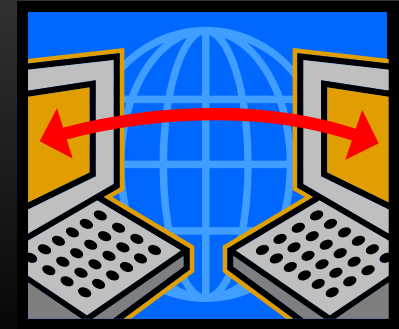
IMPORTANT! All graded material is available for a specific time period—items MUST be completed when available!

WHAT DO YOU NEED?

- TestOut LabSim Network Pro software (required)
- Study guide (optional—but recommended)
- Usual supplies (notebook, etc)
- Internet access
- Interest in networking



IMPORTANT ITEMS



- Read the course syllabus!
 - Class schedule--what is covered during the week
 - LabSim Network Pro Grading Document--tells you what assignments are required and which ones are optional
 - Always link to LabSim assignments from within Canvas--if you do not your scores will not be recorded in the Canvas gradebook
- Purchase LabSim Network Pro (instructions are contained in the Start Here! module of the course Modules tab in Canvas)
- The class Canvas site will be available on the first day of the semester
- I will send an email on the first day of the semester with additional information

COURSE POLICIES



- Keep up with course material
 - Do not fall behind on work
 - Login to Canvas at least once per week
 - Just logging in to LabSim does not satisfy attendance policies
 - Keep in contact with instructor
 - Remember! Your graded materials are only available for limited periods of time—see course syllabus for further information

START THE CLASS!

- Review the course syllabus each week
- Complete all assignments on time
- Keep in contact with me
 - Respond to emails
 - Email me or visit Zoom office hours
 - If you have any questions
 - Want to talk about CIS
 - If you get lost!
- See you online!

